



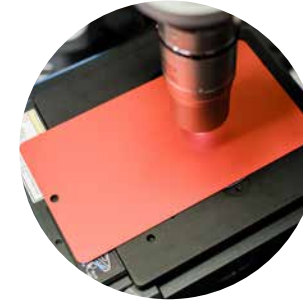
RAILWAY COATING SYSTEMS

DESIGN & FUNCTIONALITY



THE WEFA
BRAND STANDS
FOR COATINGS
WITH BRILLIANT
APPEARANCE
AND RELIABLE
PROTECTION WITH
APPROVALS IN
GERMANY, AUSTRIA
AND FRANCE.

"DESIGNING EXCELLENCE"



PAINT SYSTEMS OF THE HIGHEST QUALITY. THIS IS OUR WORLD

Success begins with trust. This is the motto of KANSAI HELIOS Wefa since its foundation in 1923. Today, the company is a specialist for waterborne two-component coating systems with environmentally friendly properties. It has been a long-standing partner for the rail vehicle industry as well as the ACE segment (agricultural, construction and earthmoving machinery). KANSAI HELIOS Wefa is a member of the KANSAI HELIOS Group, one of the top ten companies in the European coatings industry and part of the globally operating KANSAI PAINT Group. KANSAI HELIOS is a system supplier for perfectly matched coating systems: liquid coatings, powder coatings, e-coats, gelcoats, as well as industrial sealants and adhesives.

INTERNATIONAL APPROVALS

KANSAI HELIOS Wefa products are approved in Germany, Austria and France. For more than 20 years, KANSAI HELIOS Wefa has been a certified partner of the German, Austrian, Swiss and French national railroad company, and an approved supplier to the European railway industry.

"DESIGNING EXCELLENCE" – R&D AT THE HIGHEST LEVEL

At KANSAI HELIOS research and development is based on the highest standards, extensive know-how and a passion for inventive product solutions. We drive progress and innovation in our high-end laboratories. Looking far ahead, our experienced R&D teams formulate, develop and test high-performance coatings and paints, chemicals for bleaching and cleaning as well as materials for sticking and sealing that meet the high criteria of future product quality – especially with regard to the environment.

CREATING MORE VALUE FROM LESS RESOURCES

The KANSAI HELIOS Group is committed to the principles of sustainable development and relies on clean, energy-saving production technologies and the responsible use of resources. Accordingly, environmental protection and a strong ESG management are a key focus for us, not only in product development, but along the entire value chain and in all areas of the Group.



YOUR SPECIALIST FOR WATERBASED COATING SYSTEMS

Water is life and at the same time the starting point of the holistic product philosophy of the wefa brand. Our waterbased systems are on a two-component basis and meet very strict **performance, health and environmental specifications** – at a consistently high level. High product quality is just as important to us as intensive support and advice for our customers. With competence, know-how and passion, our experts immerse themselves in the world of your challenges and develop the best possible solution in close exchange with you.

INDIVIDUAL SOLUTIONS TO INCREASE YOUR PRODUCTION EFFICIENCY

We support industrial users in optimizing their manufacturing processes by providing individual product solutions. This is all the more successful if our consultants are actively involved in the project planning to provide support at an early stage and help to increase production efficiency.

RELIABLE PROTECTION FOR METAL AND PLASTIC SURFACES

Through improved formulations and enhanced product benefits, we set high standards for surface protection. wefa products reliably protect metal and plastic surfaces and make them extremely resistant to environmental influences. Internal control systems as well as external tests, audits and approval certificates regularly confirm the high product and processing quality of our coatings.

OUR WATERBASED
SYSTEMS MEET
VERY STRICT
PERFORMANCE,
HEALTH AND
ENVIRONMENTAL
SPECIFICATIONS –
AT A CONSISTENTLY
HIGH LEVEL.



FROM PRIMER TO CLEAR COAT – PERFECTLY ALIGNED

Rail vehicles are subject to extreme environmental influences. Our wefa coating systems provide high resistance and retain their excellent properties even under extreme conditions.

Long-term robust surface protection requires multi-layer paint systems. With **wefaPur**, **wefaPox** and **wefaProtect**, we offer perfectly coordinated waterbased paint systems that can be flexibly combined – from primer to clear coat.

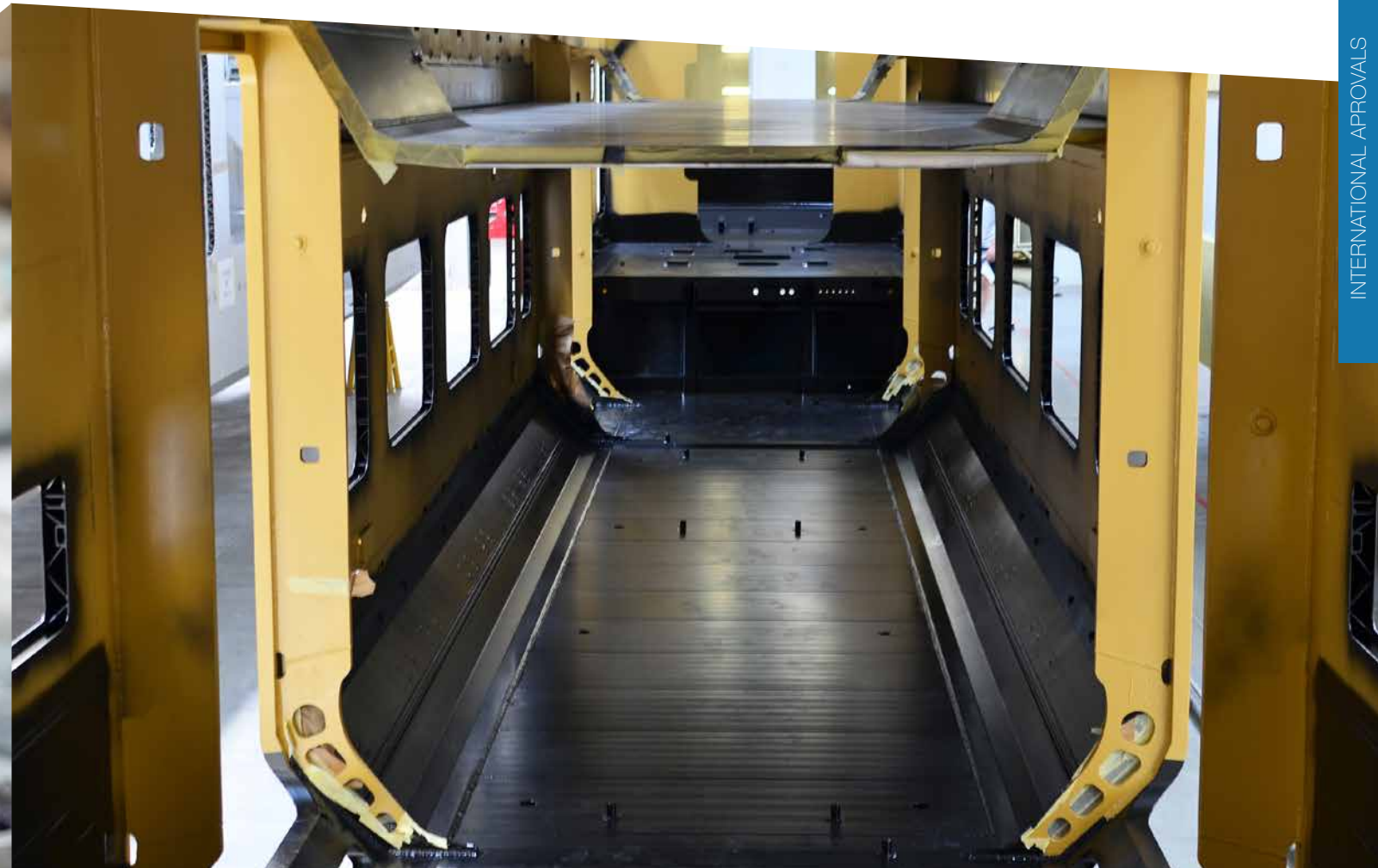
DURABLE PROTECTION: THE PROPERTIES OF WEFA COATINGS

- Waterbased coating systems
- High gloss and color stability
- Reliable corrosion protection
- High mechanical resistance
- Highest resistance to chemicals, aerosols and UV radiation
- Flame retardant
- Graffiti protection with "easy-to-clean" effect

LONG-TERM SURFACE PROTECTION, AESTHETICS AND FUNCTIONALITY

Our coating systems are easy to use and provide reliable, long-term protection against corrosion, fire, graffiti and other environmental influences.

We ensure that production processes can be **seamlessly integrated** for our customers. Our coatings guarantee excellent processing and, thanks to **fast drying**, you **save valuable energy**.





OUR WATERBASED COATING SYSTEMS
AT A GLANCE

WATERBASED SYSTEMS	PRODUCT NAME	ADVANTAGES	APPROVALS
2-COMPONENT EPOXY PRIMER	wefaPox 2K W Metallgrund G	<ul style="list-style-type: none">• Good filling and adhesion properties• Fast drying and overcoatable• Excellent adhesion to steel, VA, zinc, aluminum and plasterboard• Contains active anti-corrosion pigments• Dry film thicknesses of up to 150 µm in one pass are possible	ÖBB, DB
2-COMPONENT PUR FILLER	wefaPur 2K W Filler	<ul style="list-style-type: none">• Good corrosion protection and filling properties• Dry film thicknesses of 80-100 µm are possible in one pass	ÖBB, DB
2-COMPONENT PUR TOP COAT	wefaProtect 2K WDL	<ul style="list-style-type: none">• Very high brilliance, fullness and gloss• Resistant to cleaning agents and chemicals• Dry film thicknesses of 80 µm are possible in one pass (recommendation: 40-60 µm)	ÖBB, DB
2-COMPONENT PUR BASE COAT	wefaProtect 2K W Base Coat	<ul style="list-style-type: none">• Fast drying and recoatability (from 20 minutes depending on film thickness).• Dry film thicknesses of 80 µm are possible in one pass (recommendation: 40-60 µm)	ÖBB, DB

WATERBASED COATING SYSTEMS

WATERBASED SYSTEMS	PRODUCT NAME	ADVANTAGES	APPROVALS
2-COMPONENT PUR CLEAR COAT	wefaProtect 2K WDL transparent	<ul style="list-style-type: none">• High brilliance, build and gloss• Resistant to cleaning agents and chemicals• Dry film thicknesses of 80 µm are possible in one pass (recommendation: 40-60 µm)	ÖBB, DB
2-COMPONENT PUR CLEAR COAT "PLUS"	wefaProtect 2K W Klarlack Plus	<ul style="list-style-type: none">• Smoother surface in comparison to wefaProtect 2K WDL transparent.• Very high brilliance, build and gloss• Resistant to cleaning agents and chemicals• Dry film thicknesses of 80 µm are possible in one pass (recommendation: 40-60 µm)	DB
2-COMPONENT EPOXY MONOLAYER	wefaPox 2K W Monocoat	<ul style="list-style-type: none">• Contains active anti-corrosion pigments• Oven drying is possible• Excellent scratch and impact resistance, weather resistant, plasticized• Dry film thicknesses of up to 200 µm are possible in one pass (recommendation: approx. 140 µm)	DB, SNCF
2-COMPONENT EPOXY COAT	wefaPox 2K W DS Lack	<ul style="list-style-type: none">• High stone chip protection• Can only be used on primed surface (contains no active anti-corrosion pigments)• Air and heat controlled drying• Weather resistant, plasticized• Dry film thicknesses of up to 200 µm are possible in one pass (recommendation: approx. 140 µm)	ÖBB, DB
2-COMPONENT PUR TOP COAT	wefaProtect 2K W Effektlack	<ul style="list-style-type: none">• "Pearl effect"• Various gloss levels• Fast curing, very good covering power,• Excellent scratch resistance and impact strength, chemical and fuel resistant• Weather and graffiti resistant• Excellent chalking resistance and color retention• Very high mechanical resistance	ÖBB, DB

SOLVENTBASED SYSTEM

SOLVENTBASED SYSTEM	PRODUCT NAME	ADVANTAGES	APPROVALS
1-COMPONENT CLEAR COAT	wefaPermatec 1K Clearcoat	<ul style="list-style-type: none">• Tested and confirmed by accredited laboratory• Graffiti and detergent resistance (up to 18 times higher than required by DB)• Spot repair and polishing capability• Savings in energy and process times due to faster drying	DB



CERTIFIED PARTNER OF THE RAILWAY INDUSTRY

In the international rail vehicle industry, the focus is not only on aesthetic properties such as flawless gloss and color stability, but also on the functionality of the coating. Coatings must protect the substrate from mechanical and chemical influences both indoors and outdoors. Corrosion protection and effortless cleaning - especially when removing graffiti - are paramount.

KANSAI HELIOS Wefa is your specialist for rail vehicle coatings and has been a certified partner and approved supplier to the European rail vehicle industry for decades. Our coatings are approved by DB AG, ÖBB and SNCF.



HIGH-QUALITY
APPEARANCE
AND FUNCTIONAL
SURFACES ARE A
MUST, INSIDE AND
OUT. WITH WEFA
COATING SYSTEMS,
YOU ARE ON THE
SAFE SIDE.



KANSAI HELIOS Wefa GmbH
Hafenstraße 223-225, 45356 Essen, Deutschland
T: +49 (0) 201 8331600
E: info@kansaihelios-wefa.de
www.kansaihelios-wefa.de



Visit our YouTube channel!
KANSAI HELIOS Industrial Coating Solutions

Member of  **KANSAI HELIOS** Part of  **KANSAI PAINT**